

FEATURES

- **Compact, high-capacity, and resistant to inductive loads**

The relay is a compact 16×30.4×26.5 mm .630×1.197×1.043 inch. It can control an inductive load ($\cos\phi = 0.7$) with inrush current of 70 A and steady state current of 20 A.

- **Excellent contact welding resistance**

High contact pressure, a forced opening mechanism, and a forced wiping mechanism realizes an excellent contact welding resistance.

- **High breakdown voltage and surge resistant relay**

More than 6.4 mm .252 inch maintained for the insulation distance between contacts and coil, and the breakdown voltage between contacts and coil is 5,000 V for 1 minute. In addition, the surge resistance between contacts and coil is greater than 10,000 V.

- **Resistant to external force**

An absorber mechanism is used on the load terminals, giving a large improvement in characteristics variations caused by the external force during FASTON placement/removal.

- **Flux resistance mechanism**

The terminal area is plugged with resin to prevent flux seepage during PCB mounting. (TMP type)

- **Conforms to the various safety standards**

UL, CSA approved.
TÜV, VDE under application.

- **The line up can support economical mounting methods.**

The relay are equipped with a drive terminal (coil terminal) on one side for PCBs, and a load terminal (tab terminal #250) on the reverse side. The line up includes the TM type which can be attached directly to the PCB composing a drive circuit, and the TMP type which supports economical wiring. The TMP type can also be directly attached, and a high capacity load can be wired to the tab terminal.

COMMENTS ABOUT Cd FREE

We have introduced Cadmium free type products to reduce the material which is not good for our environment. (The suffix "F" should be added to the part number.) If you are still using Cadmium containing parts, which don't have "F" on the suffix of the part number, please use Cadmium free parts from now on. The life of the Cadmium free parts may be shorter than the Cadmium containing parts based on the load condition, so please evaluate the Cadmium free parts with your actual application before use.

SPECIFICATIONS

Contact

| | | | |
|--|--------------------------------|--|---------------------|
| Arrangement | | 1 Form A | |
| Initial contact resistance, max. (By voltage drop 6 V DC 1 A) | | 30 mΩ | |
| Contact material | | AgSnO ₂ type | |
| Rating (resistive load) | Nominal switching capacity | 20 A 250 V AC | |
| | Max. switching power | 5,000 VA | |
| | Max. switching voltage | 250 V AC | |
| | Max. switching current | 20 A | |
| Min. switching capacity ^{#1} | | 100 mA, 5 V DC | |
| Expected life (min. ope.) | Mechanical (at 180 cpm) | | 10 ⁶ |
| | Electrical Life (at 20 cpm) | Resistive load 20 A, 250 V AC (cosφ = 1) | 10 ⁵ |
| | | Inrush 70 A, Steady 20 A (250 V AC cosφ = 0.7) | 10 ⁵ |
| | Inductive load | Inrush 80 A, Cut-off 80 A (When the motor is locked) (250 V AC cosφ = 0.7) | 1.5×10 ³ |

Coil

| | |
|-------------------------|--------|
| Nominal operating power | 900 mW |
|-------------------------|--------|

^{#1} This value can change due to the switching frequency, environmental conditions, and desired reliability level, therefore it is recommended to check this with the actual load.

Remarks

- * Specifications will vary with foreign standards certification ratings.
- ^{#1} Measurement at same location as "Initial breakdown voltage" section
- ^{#2} Detection current: 10mA
- ^{#3} Wave is standard shock voltage of ±1.2 × 50μs according to JEC-212-1981
- ^{#4} Excluding contact bounce time
- ^{#5} Half-wave pulse of sine wave: 11ms; detection time: 10μs
- ^{#6} Half-wave pulse of sine wave: 6ms
- ^{#7} Detection time: 10μs
- ^{#8} Refer to "6. Usage, Storage and Transport Conditions" in [AMBIENT ENVIRONMENT](#) section in [Relay Technical Information](#).

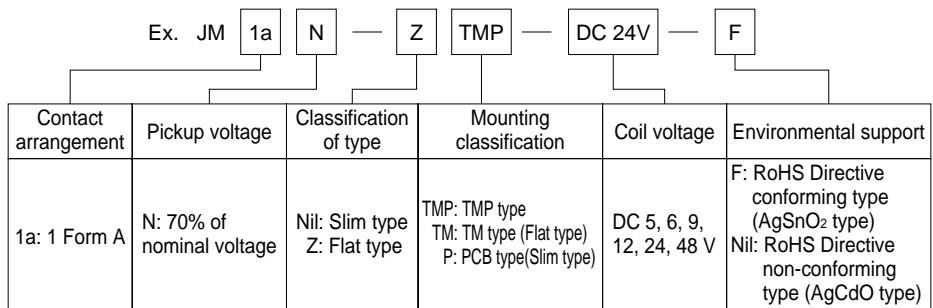
Characteristics

| | | |
|---|---------------------------|--|
| Max. operating speed | | 180 cpm |
| Initial insulation resistance ^{*1} | | Min. 100 MΩ (at 500 V DC) |
| Initial breakdown voltage ^{*2} | Between open contacts | 1,000 Vrms for 1 min. |
| | Between contacts and coil | 5,000 Vrms for 1 min. |
| Surge voltage between contact and coil ^{*3} | | Min. 10,000 V |
| Operate time ^{*4} (at nominal voltage)(at 20°C) | | Max. 20ms (Approx. 8 ms) |
| Release time (without diode) ^{*4} (at nominal voltage)(at 20°C) | | Max. 10ms (Approx. 3 ms) |
| Temperature rise (at 60°C) | | Max. 55°C (Contact switching current: 20 A/voltage applied to coil: 100%V) |
| Shock resistance | Functional ^{*5} | Min. 98 m/s ² {10 G} |
| | Destructive ^{*6} | Min. 980 m/s ² {100 G} |
| Vibration resistance | Functional ^{*7} | 10 to 55 Hz at double amplitude of 1.6 mm |
| | Destructive | 10 to 55 Hz at double amplitude of 2 mm |
| Conditions for operation, transport and storage ^{*8} (Not freezing and condensing at low temperature) | Ambient temp. | -40°C to +60°C -40°F to +140°F |
| | Humidity | 5 to 85% R.H. |
| Unit weight | Slim TMP | Approx. 28 g .99 oz |
| | Flat TMP | Approx. 32 g 1.13 oz |
| | Flat TM | Approx. 33 g 1.16 oz |

TYPICAL APPLICATIONS

- Compressor and heater control in air conditioners
- Power control in hot air type heaters
- Magnetron control in microwave ovens
- Lamp and motor control in OA equipment such as copiers and facsimiles.

ORDERING INFORMATION



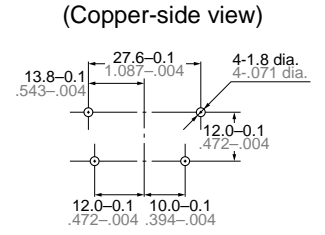
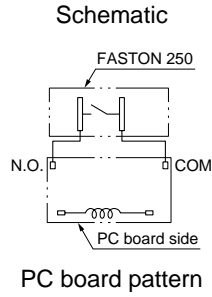
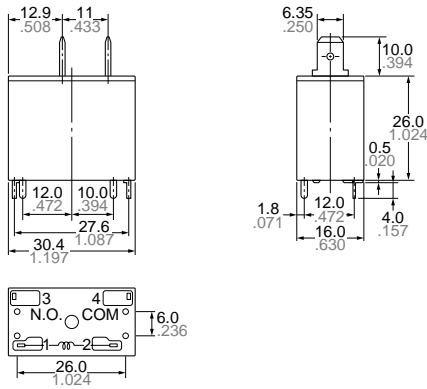
(Note) 1. Standard packing: Carton: 50pcs. Case: 200pcs. UL/CSA, VDE approved type is standard.

TYPES AND COIL DATA (at 20°C 68°F)

| Part No. | | | | Nominal voltage, V DC | Pick-up voltage | Drop-out voltage, | Nominal operating current, mA | Coil resistance, Ω (±10%) | Nominal operating power, mW | Max. allowable voltage, V DC |
|-------------------|-----------------|--------------------|-------------------|-----------------------|-----------------|-------------------|-------------------------------|---------------------------|-----------------------------|------------------------------|
| Slim | | Flat | | | | | | | | |
| TMP | PCB | TMP | TM | | | | | | | |
| JM1aN-TMP-DC5V-F | JM1aN-P-DC5V-F | JM1aN-ZTMP-DC5V-F | JM1aN-ZTM-DC5V-F | 5 | 3.5 | 0.5 | 180 | 27.8 | 900 | 5.5 |
| JM1aN-TMP-DC6V-F | JM1aN-P-DC6V-F | JM1aN-ZTMP-DC6V-F | JM1aN-ZTM-DC6V-F | 6 | 4.2 | 0.6 | 150 | 40 | 900 | 6.6 |
| JM1aN-TMP-DC9V-F | JM1aN-P-DC9V-F | JM1aN-ZTMP-DC9V-F | JM1aN-ZTM-DC9V-F | 9 | 6.3 | 0.9 | 100 | 90 | 900 | 9.9 |
| JM1aN-TMP-DC12V-F | JM1aN-P-DC12V-F | JM1aN-ZTMP-DC12V-F | JM1aN-ZTM-DC12V-F | 12 | 8.4 | 1.2 | 75 | 160 | 900 | 13.2 |
| JM1aN-TMP-DC24V-F | JM1aN-P-DC24V-F | JM1aN-ZTMP-DC24V-F | JM1aN-ZTM-DC24V-F | 24 | 16.8 | 2.4 | 37.5 | 640 | 900 | 26.4 |
| JM1aN-TMP-DC48V-F | JM1aN-P-DC48V-F | JM1aN-ZTMP-DC48V-F | JM1aN-ZTM-DC48V-F | 48 | 33.6 | 4.8 | 18.75 | 2,560 | 900 | 52.8 |

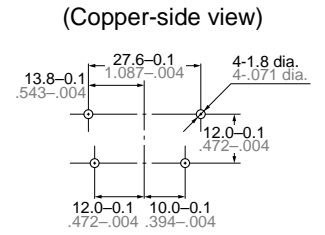
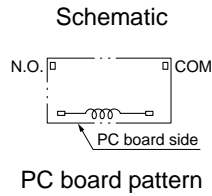
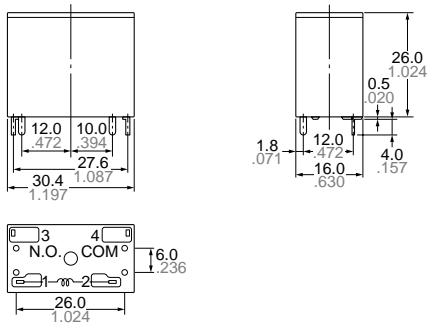
DIMENSIONS

Slim TMP type



General tolerance: $\pm 0.4 \pm 0.016$

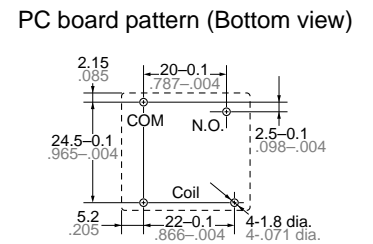
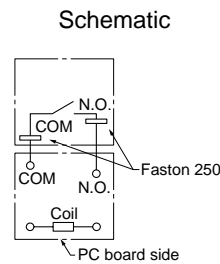
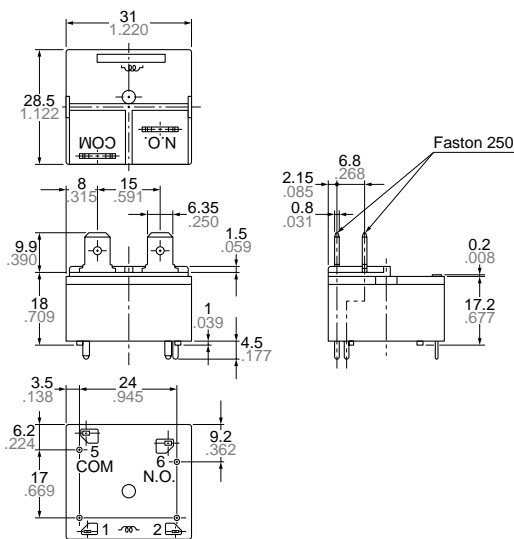
Slim PCB type



General tolerance: $\pm 0.4 \pm 0.016$

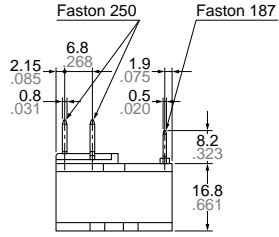
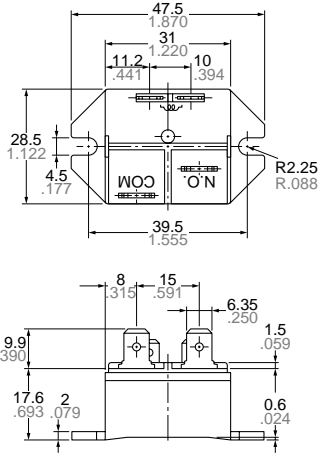
Tolerance: $\pm 0.1 \pm 0.004$

Flat TMP type

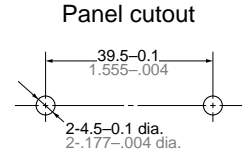
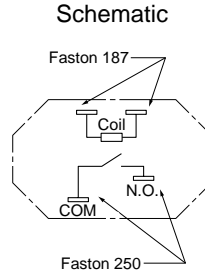


General tolerance: $\pm 0.4 \pm 0.016$

Tolerance: $\pm 0.1 \pm 0.004$



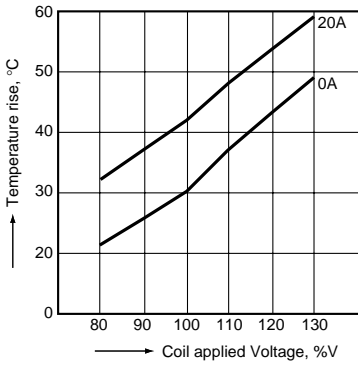
General tolerance: $\pm 0.4 \pm .016$



REFERENCE DATA

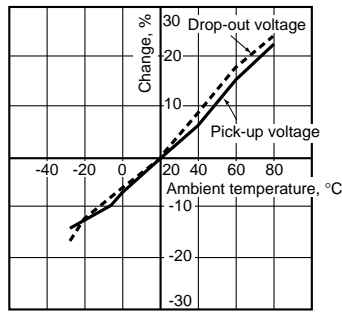
1. Coil temperature rise

Place to be measured: Inside of coil
Ambient temperature: 25°C 77°F



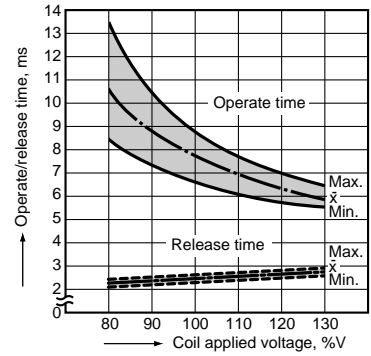
2. Ambient temperature characteristics

Sample: JM1aN-TMP-DC24V-F, 5 pcs.

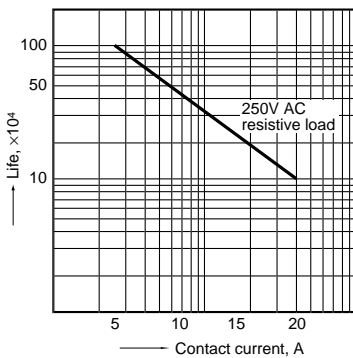


3. Operate/release time

Sample: JM1aN-TMP-DC24V-F, 5 pcs.



4. Life curve



For Cautions for Use, see [Relay Technical Information](#).