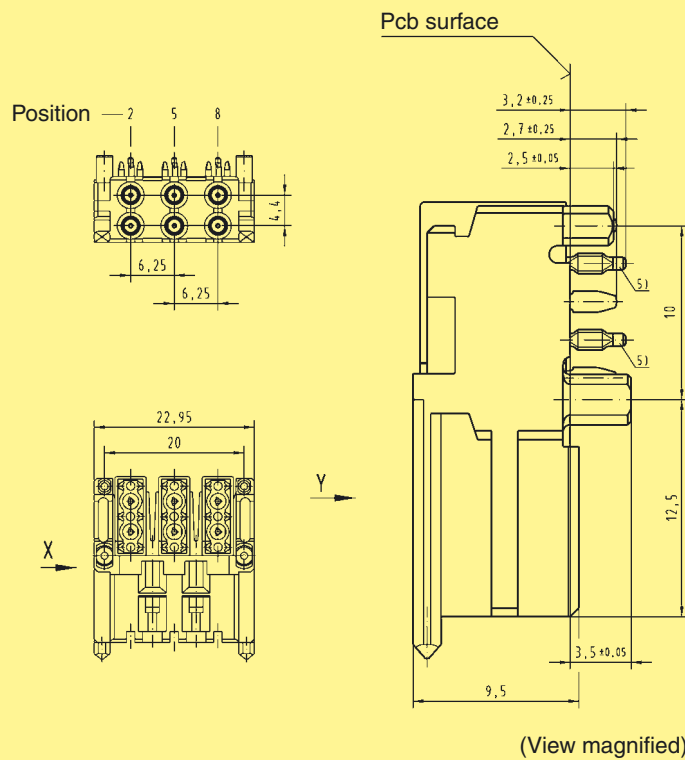


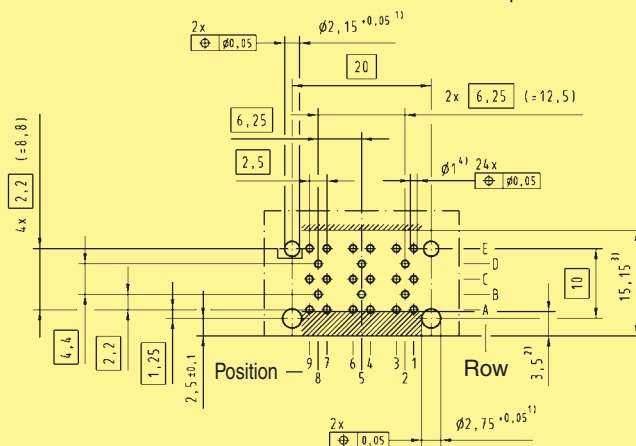
Angled modules

Identification	Number of contacts	SU	loaded positions	Part number
Mini Coax Low Profile module, press-in termination	6	1	2, 5, 8	07 31 100 0027

Dimensions



Board drillings



Row B, D: position 2, 5, 8 for signal line
 Row A, C, E: position 1, 3, 4, 6, 7, 9 for ground-line

- 1) Non-metallised drillings
- 2) No tracks, except solder eyes
- 3) Limit area of components (valid for both pcb-sides)
- 4) Details see page 07.05
- 5) Press-in zone in any angular position related to it's longitudinal axis possible

Dimensions [mm]